

# Helm Maintenance Manager™



As the maintenance manager for a maritime fleet, your job is to minimize unplanned downtime and reduce maintenance costs while making sure that your boats stay within regulatory compliance. To do that you need to plan maintenance routines, schedule and prioritize projects, track asset histories, and keep in constant contact with operations and the crew.

Helm Maintenance Manager™ is the fix you've been looking for. Helm is designed to increase your department's effectiveness. You can build your list of assets and let Helm do the rest. It can record maintenance and repair details of any equipment, shipyard or terminal, and it provides real-time views of maintenance on vessels and sites. You'll receive automatic reminders when preventative maintenance tasks and certifications are coming due, and you'll be able to coordinate with purchasing to make sure

that the parts you require are available when you they're needed. Helm also allows you to monitor actual versus estimated hours and costs for each task or work order.

Unlike the many generic maintenance systems on the market today, we've designed Helm Maintenance Manager™ specifically to meet the unique needs of the maritime industry, and to seamlessly integrate with our other Helm modules. Through a single centralized system that runs the entire company, you'll be able to coordinate with dispatch, personnel, purchasing, safety, compliance, and even the crew onboard.

**BENEFITS:**

- Organize all preventative maintenance in one centralized system
- Increase equipment life and performance through better maintenance routines
- Decrease expensive un-scheduled down time
- Improve monitoring through warning systems
- Better internal and external audit preparation and readiness

**FEATURES:**

**Preventative Maintenance Features:**

- Build custom lists of equipment and components to be maintained
- Standardize maintenance procedures
- Ability to schedule maintenance by hour meters (“floating”) or by fixed intervals (“calendar”) of any length (days to years)
- Organize, manage, and track all work orders and requests
- View a full maintenance history for any piece of equipment
- Build a dry dock to-do list and add requests or PMs as they come in
- Group together work orders into projects
- Track due dates of certificates, Inspections, and decals
- Track VGP (Vessel General Permit) inspections
- Attach a list of standard parts to each PM task for easy ordering
- Receive engine hours updates automatically from Helm Onboard™

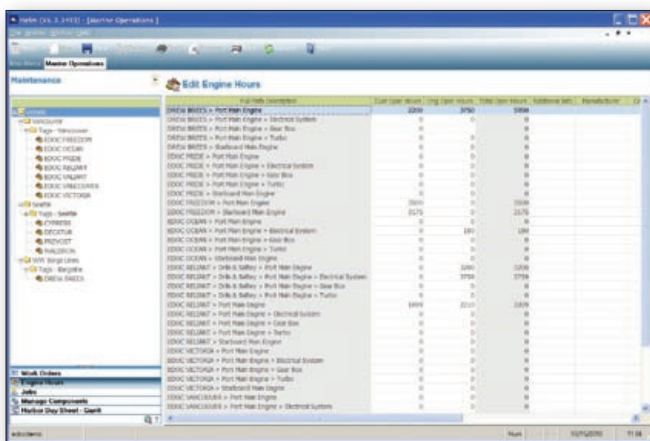
- Attach documents, photos, and scanned images to any component, work order, or project
- Track actual versus estimated hours and costs for each work order
- Tracking and analysis of repetitive failures for process improvement

**Integration with Helm Purchasing Manager™**

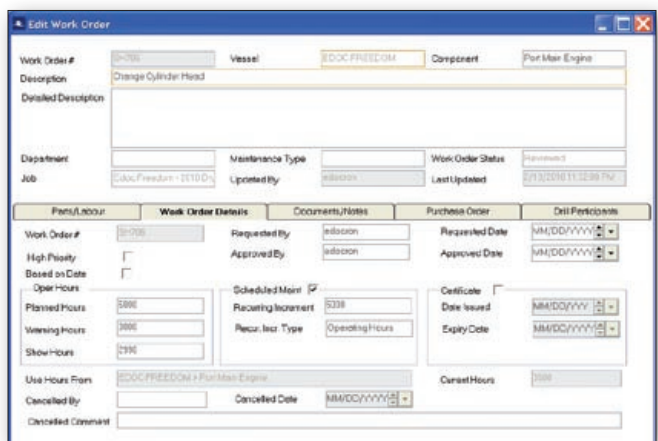
- Automatically generate purchase orders for parts or outside labor
- Automatically reduce inventory when work orders are completed
- Keep a list of standard parts for each maintenance component

**MINIMUM TECHNICAL REQUIREMENTS:**

- Designed for desktop environment with a Microsoft SQL server database back-end
- Windows XP or Windows 7 OS
- MS SQL Server 2008 R2 (if run in a Terminal or Citrix environment. Helm will also run in Server 2003 & 2008 64bit environment)



By recording operating hours, work orders will change severity/priority as engine hours reach their maintenance due date.



Work orders can be scheduled by date or by operating hours, and can be set to recur based on the same setting. Parts, Labor, POs, and equipment details are all entered in the work order form.



Contact Us  
 250-360-1991  
 www.edocgroup.com